

PCM-Series



Dimension & Selection Guide



CANADA: 100% OUTSIDE AIR ONLY

+1.507.451.3524

www.phoenixairsystems.com

PCM-Series Selection Guide



CFM (m ³ /h)	MODEL	MOTOR HP (kW) AT 1 in wc (2.5 mbar) EXTERNAL STATIC PRESSURE	dB "A" AT 1 in wc (2.5 mbar)** EXTERNAL STATIC PRESSURE	HEAT INPUT AT MAX. TEMP. RISE (Btu/h) x 1000		MINIMUM INLET GAS PRESSURE in wc (mbar)***	MANIFOLD SIZE in NPT (mm)
				NG	LPG		
1,000 (1,700)	PCM112	2 (1.5)	70	97	76	7 (17.5)	0.75 (19)
2,000 (3,400)	PCM112	2 (1.5)	70	194	151	7 (17.5)	0.75 (19)
3,000 (5,100)	PCM112	3 (2.2)	70	292	227	7 (17.5)	0.75 (19)
4,000 (6,800)	PCM112	3 (2.2)	70	389*	302	7 (17.5)	0.75 (19)
4,000 (6,800)	PCM115	3 (2.2)	69	432	346	7 (17.5)	1.0 (25)
5,000 (8,500)	PCM115	3 (2.2)	68	540	432	7 (17.5)	1.0 (25)
6,000 (10,200)	PCM115	5 (4.0)	67	648	518	7 (17.5)	1.0 (25)
7,000 (11,900)	PCM115	5 (4.0)	66	756*	605	7 (17.5)	1.0 (25)
8,000 (13,600)	PCM115	5 (4.0)	66	800*	691	7 (17.5)	1.0 (25)
9,000 (15,300)	PCM115	7.5 (5.5)	67	800*	778	7 (17.5)	1.0 (25)
10,000 (17,000)	PCM115	7.5 (5.5)	68	800*	800	7 (17.5)	1.0 (25)
7,000 (11,900)	PCM118	5 (4.0)	66	756	605	7 (17.5)	1.25 (32)
8,000 (13,600)	PCM118	5 (4.0)	66	864	691	7 (17.5)	1.25 (32)
9,000 (15,300)	PCM118	7.5 (5.5)	67	972	778	7 (17.5)	1.25 (32)
10,000 (17,000)	PCM118	7.5 (5.5)	68	1,080	864	7 (17.5)	1.25 (32)
11,000 (18,700)	PCM118	10 (7.5)	68	1,188	950	7 (17.5)	1.25 (32)
12,000 (20,400)	PCM118	10 (7.5)	69	1,296	1,037	7 (17.5)	1.25 (32)
13,000 (22,100)	PCM118	CF	CF	1,404	1,123	7 (17.5)	1.25 (32)
14,000 (23,800)	PCM118	CF	CF	1,512	1,210	7 (17.5)	1.25 (32)
12,000 (20,400)	PCM125	7.5 (5.5)	73	1,296	1,037	9 (22.5)	1.5 (38)
14,000 (23,800)	PCM125	10 (7.5)	73	1,512	1,210	9 (22.5)	1.5 (38)
16,000 (27,200)	PCM125	10 (7.5)	76	1,728	1,382	9 (22.5)	1.5 (38)
18,000 (30,600)	PCM125	15 (11.0)	77	1,944	1,555	9 (22.5)	1.5 (38)
20,000 (34,000)	PCM125	15 (11.0)	77	2,160	1,728	9 (22.5)	1.5 (38)
22,000 (37,400)	PCM125	20 (15.0)	77	2,376	1,901	9 (22.5)	1.5 (38)
25,000 (42,500)	PCM125	20 (15.0)	77	2,700	2,160	9 (22.5)	1.5 (38)
25,000 (42,500)	PCM130	15 (11.0)	74	2,700	2,160	11 (27.5)	2.0 (50)
27,500 (46,700)	PCM130	15 (11.0)	75	2,970	2,376	11 (27.5)	2.0 (50)
30,000 (51,000)	PCM130	20 (15.0)	76	3,240	2,592	11 (27.5)	2.0 (50)
32,500 (55,200)	PCM130	25 (18.5)	77	3,510	2,808	11 (27.5)	2.0 (50)
35,000 (59,500)	PCM130	25 (18.5)	79	3,780	3,024	11 (27.5)	2.0 (50)
37,500 (63,700)	PCM130	30 (22.5)	79	4,050*	3,240	11 (27.5)	2.0 (50)
40,000 (68,000)	PCM130	CF	CF	4,320*	3,456	11 (27.5)	2.0 (50)
35,000 (59,500)	PCM225	25 (18.5)	77	3,780	N/A	Consult Factory	1.5 - 3.0 (38 - 76)
37,500 (63,700)	PCM225	30 (22.5)	77	4,050			1.5 - 3.0 (38 - 76)
40,000 (68,000)	PCM225	30 (22.5)	77	4,320			1.5 - 3.0 (38 - 76)
42,500 (72,200)	PCM225	40 (30.0)	77	4,590			1.5 - 3.0 (38 - 76)
45,000 (76,500)	PCM225	40 (30.0)	77	4,860			1.5 - 3.0 (38 - 76)
47,500 (80,700)	PCM225	40 (30.0)	78	5,130			1.5 - 3.0 (38 - 76)
45,000 (76,500)	PCM230	30 (22.5)	77	4,860	N/A		1.5 - 3.0 (38 - 76)
47,500 (80,700)	PCM230	30 (22.5)	77	5,130			1.5 - 3.0 (38 - 76)
50,000 (85,000)	PCM230	40 (30.0)	77	5,400			1.5 - 3.0 (38 - 76)
52,500 (89,200)	PCM230	40 (30.0)	78	5,670			1.5 - 3.0 (38 - 76)
55,000 (93,400)	PCM230	40 (30.0)	78	5,940			1.5 - 3.0 (38 - 76)
57,500 (97,700)	PCM230	40 (30.0)	79	6,210			1.5 - 3.0 (38 - 76)
60,000 (101,900)	PCM230	50 (37.5)	80	6,480		1.5 - 3.0 (38 - 76)	

CF = Consult Factory

* Temperature rise at this CFM is less than the maximum temperature rise.

** dB "A" is measured at 10' (3 m) from unducted discharge.

*** Maximum Inlet Gas Pressure: ANSI - Compliant Manifold (PCM112 - PCM130) = 14 in wc (34.9 mbar)

ANSI - Compliant Manifold (PCM225 and PCM230) = 5 psi (344.7 mbar)

FM and XL Insurance (formerly-IRI) - Compliant Manifold (All Models) = 5 psi (344.7 mbar)

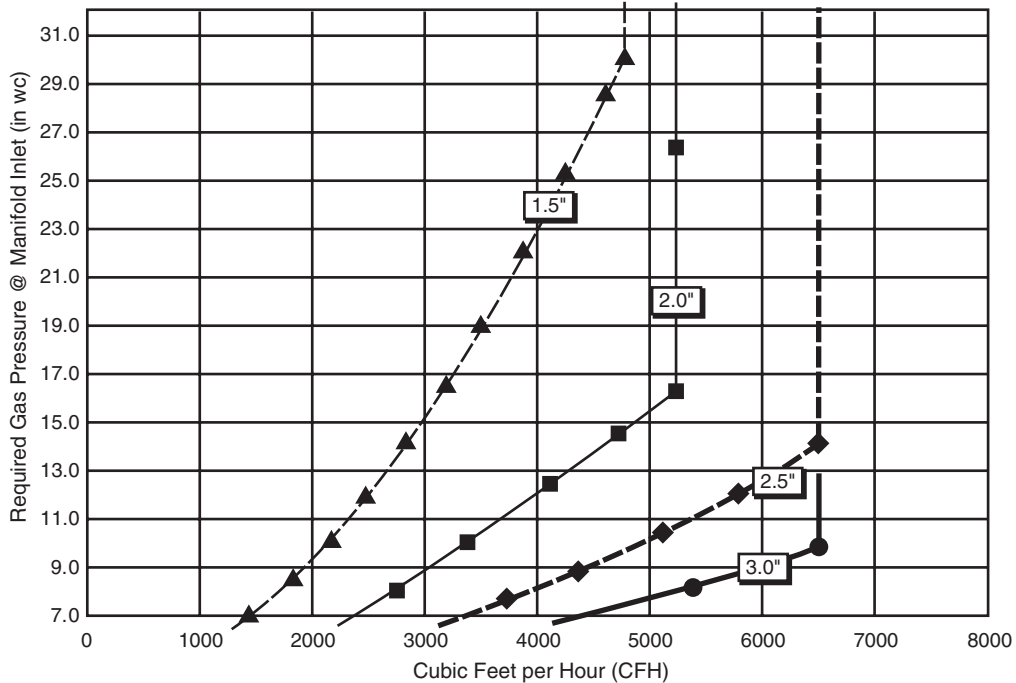


PCM225 & PCM230 Manifold Selection Charts

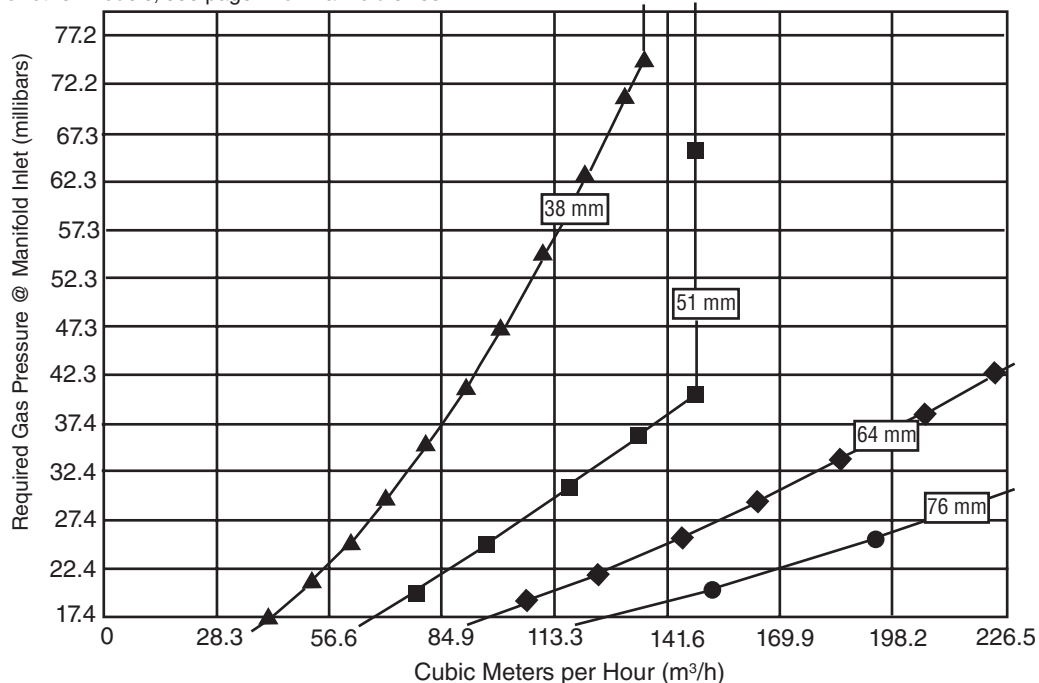
DIRECTIONS:

- To Calculate CFH:
 - For NG Unit: 1 MBH = 1,000 Btu/h = 1 CFH = 0.028 CMH (m³/h)
 - For LPG Unit: 1 MBH = 1,000 Btu/h = .65 CFH = 0.018 CMH (m³/h)
- Select a point on the chart that represents the intersection of the inlet gas pressure and the unit CFH.
- Select the manifold size to the right of this point.

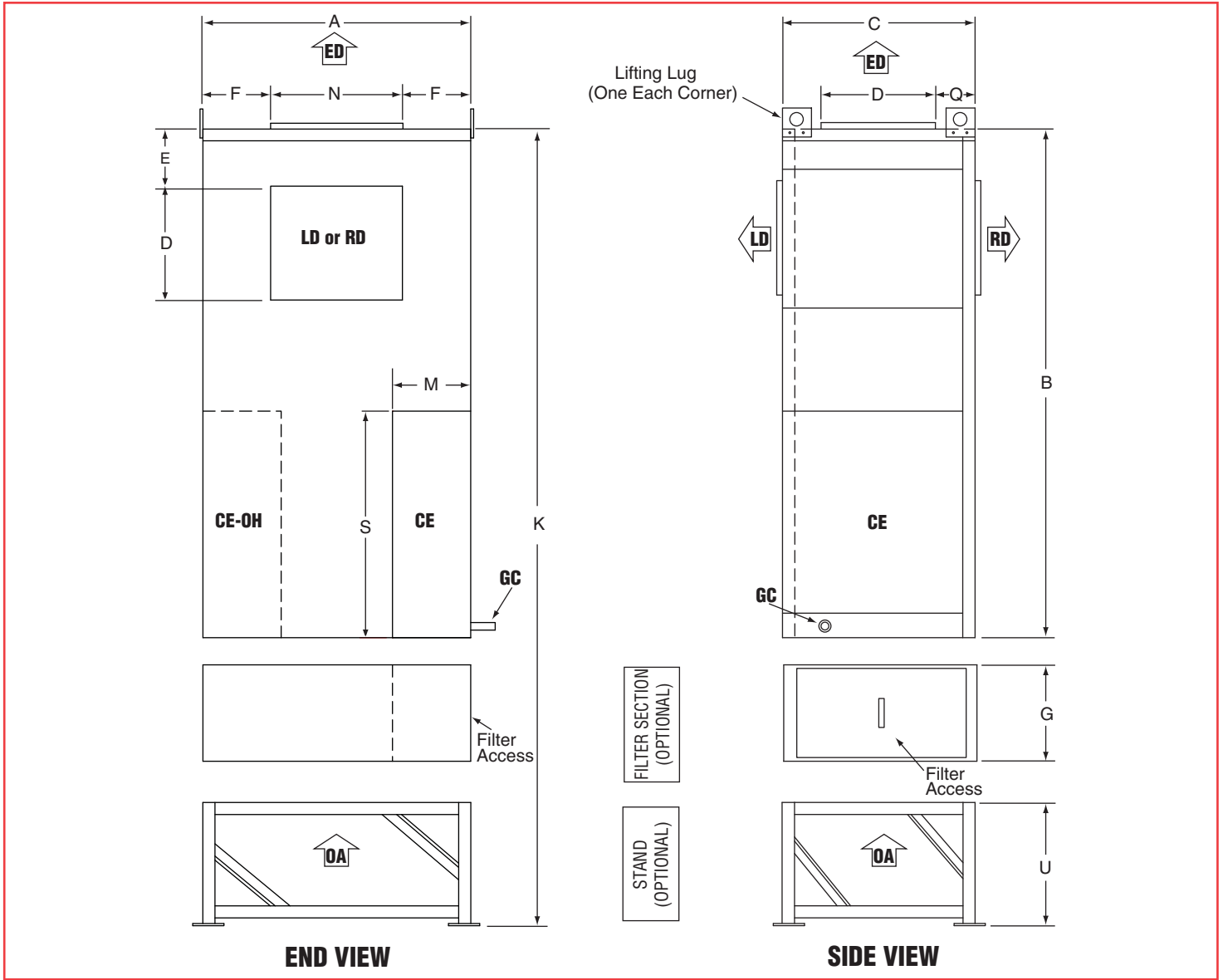
Natural Gas Flow vs. Pressure Drop using the Maxon NP burner for PCM225 & PCM230 (specific gravity = 0.64)
For other models, see page 2 for manifold sizes.



Natural Gas Flow vs. Pressure Drop using the Maxon NP burner for PCM225 & PCM230 (specific gravity = 0.64)
For other models, see page 2 for manifold sizes.



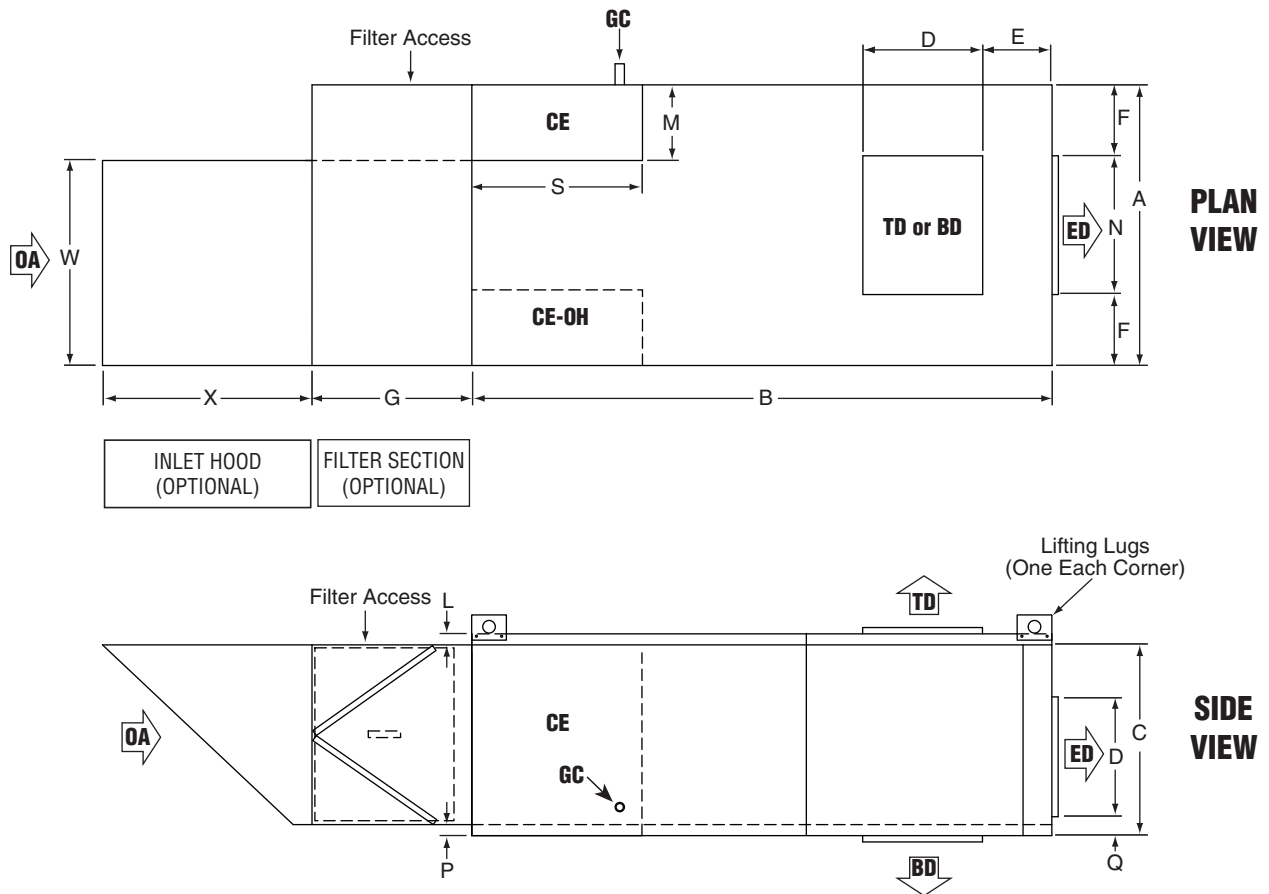
PCM112 Upright Model Dimensions



CABINET DIMENSIONS																			
MODEL	CFM	A	B	C	D	E	F	G	K	L	M	N	P	Q	S	U	W	X	
PCM112	(in)	1,000 - 3,000	32.3	60.3	28.3	10.4	6.8	11.5	27.0	117.3	1.5	8.0	9.3	1.8	3.1	35.2	30.0	25.2	38.4
	(cm)		82.0	153.2	71.9	26.4	17.3	29.2	68.6	297.9	3.8	20.3	23.6	4.6	7.9	89.4	76.2	64.0	97.5
PCM112	(in)	4,000	32.3	60.3	28.3	13.8	7.6	8.2	27.0	117.3	1.5	8.0	15.8	1.8	3.1	35.2	30.0	25.2	38.4
	(cm)		82.0	153.2	71.9	35.1	19.3	20.8	68.6	297.9	3.8	20.3	40.1	4.6	7.9	89.4	76.2	64.0	97.5



PCM112 Horizontal Model Dimensions



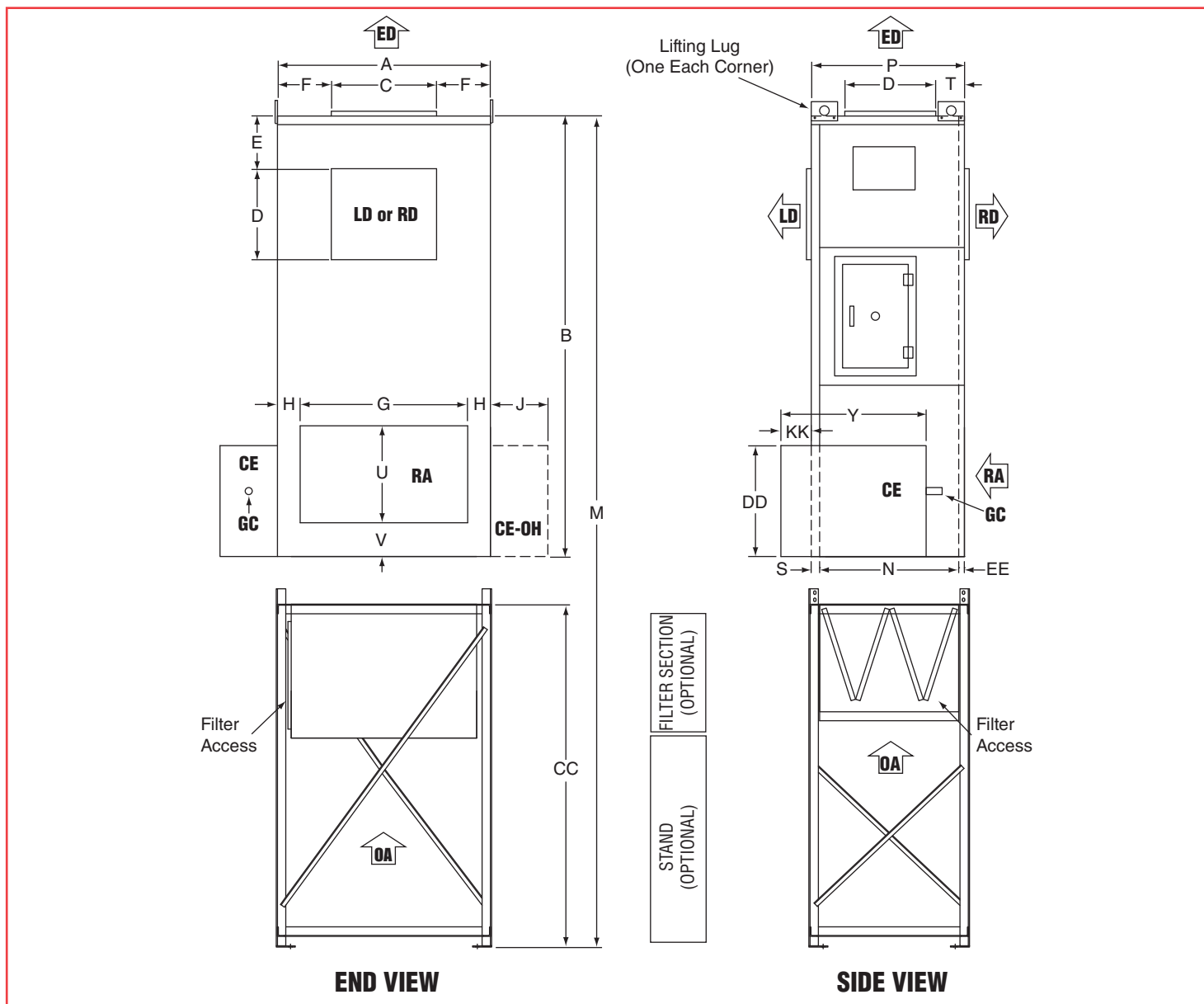
ESTIMATED SHIPPING WEIGHTS			
MODEL		AIR HANDLER	SKID
PCM112	(lb)	450.0	50.0
	(kg)	204.1	22.7

IMPORTANT NOTES:

- Shipping weights apply to both horizontal and upright models.
- All dimensions and weights are subject to change without notice.
- Outdoor air duct size varies. Consult factory.
- Control enclosure is located on the right side of the air handler when looking downstream into the inlet end.

LEGEND
BD = Bottom Discharge
CE = Control Enclosure
GC = Gas Connection
ED = End Discharge
LD = Left Discharge
OA = Outside Air
RA = Return Air (Optional)
RD = Right Discharge
TD = Top Discharge
OH = Opposite Hand

PCM115 - PCM130 Upright Model Dimensions



CABINET DIMENSIONS																						
MODEL		A	B	C	D	E	F	G	H	J	M	N	P	Q	R	S	T	U	V	W	Y	Z
PCM115/ PCM118	(in) (cm)	44.2 112.3	92.3 234.4	22.0 55.9	19.0 48.3	10.5 26.7	11.1 28.2	37.9 96.3	3.2 8.1	14.0 35.6	* *	29.6 75.2	32.7 83.1	48.1 122.2	35.1 89.2	1.6 4.1	3.0 7.6	10.0 25.4	3.4 8.6	56.4 143.2	37.2 94.5	34.0 86.3
PCM125	(in) (cm)	56.0 142.2	116.2 295.1	31.5 80.0	31.5 80.0	13.8 35.0	12.3 31.2	44.3 112.5	6.0 15.2	17.0 43.2	188.2 477.8	52.6 133.6	56.1 142.5	69.6 176.8	23.3 59.2	1.5 3.8	3.9 9.9	26.5 67.3	6.0 15.2	89.3 226.8	44.0 111.8	31.0 78.7
PCM130	(in) (cm)	68.0 172.7	116.2 295.1	36.8 93.5	36.8 93.5	17.0 43.2	15.6 39.6	56.3 143.0	6.0 15.2	17.0 43.2	188.2 477.8	56.6 143.8	60.1 152.7	69.6 176.8	23.3 59.2	1.5 3.8	3.9 9.9	30.5 77.5	6.0 15.2	86.9 220.7	44.0 111.8	31.0 78.7

Refer to M in stand chart below.

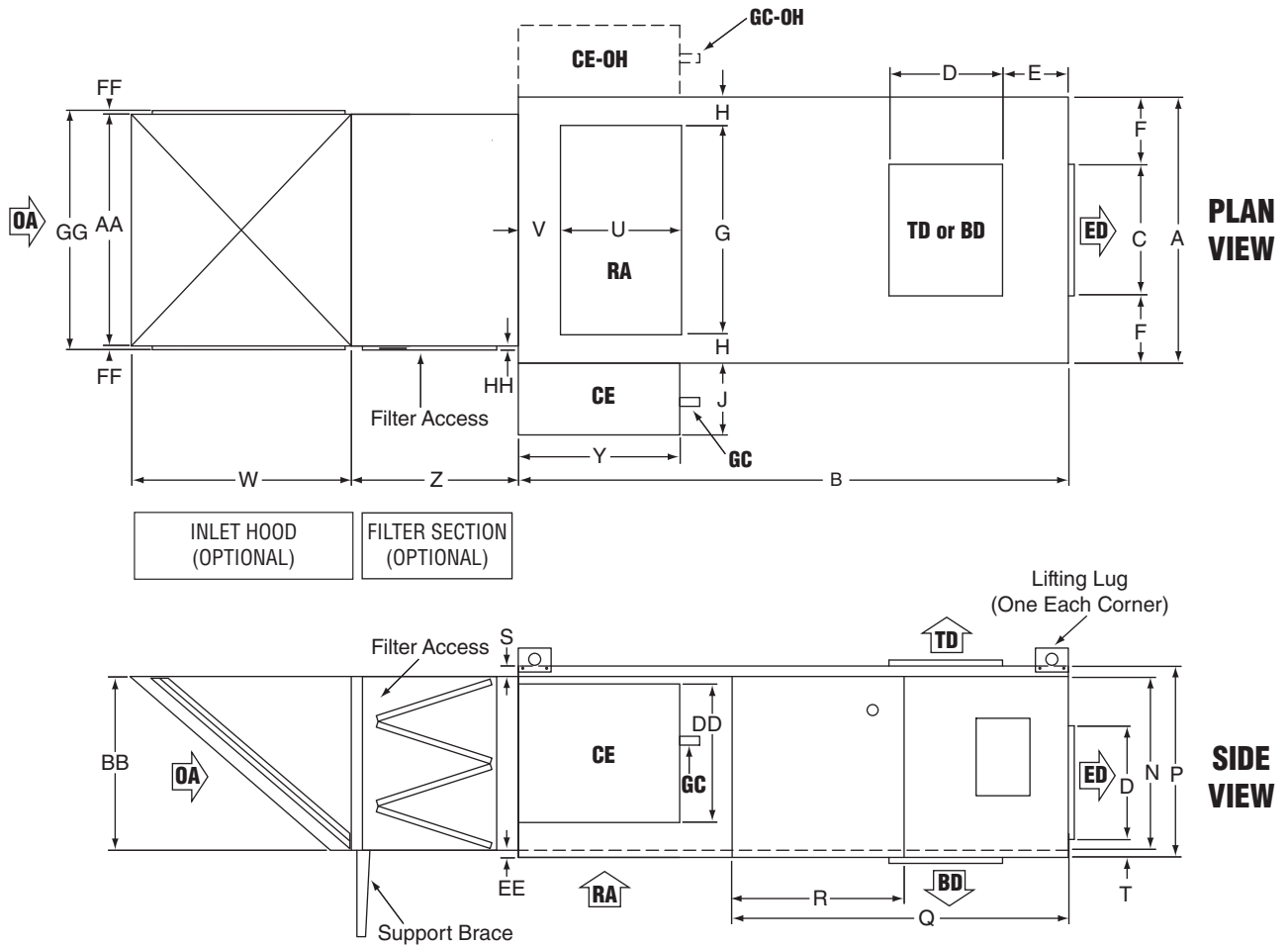
CABINET DIMENSIONS										
MODEL		AA	BB	CC	DD	EE	FF	GG	HH	KK
PCM115/ PCM118	(in) (cm)	38.8 98.6	28.8 73.2	** **	28.6 72.6	1.5 3.8	1.1 2.8	41.0 104.1	0.5 1.3	6.5 16.5
PCM125	(in) (cm)	49.7 126.2	52.8 134.1	72.0 182.9	33.0 83.8	2.0 5.1	1.1 2.8	52.0 132.1	0.4 1.0	N/A
PCM130	(in) (cm)	64.1 162.8	56.8 144.3	72.0 182.9	33.0 83.8	2.0 5.1	1.1 2.8	66.4 168.7	0.4 1.0	N/A

STANDS		
MODEL	M*	HEIGHT CC**
PCM115/ PCM118	(in)	145.3
	(cm)	369.1
PCM115/ PCM118	(in)	72.0
	(cm)	182.9

Refer to CC in stand chart to the right.



PCM115 - PCM130 Horizontal Model Dimensions



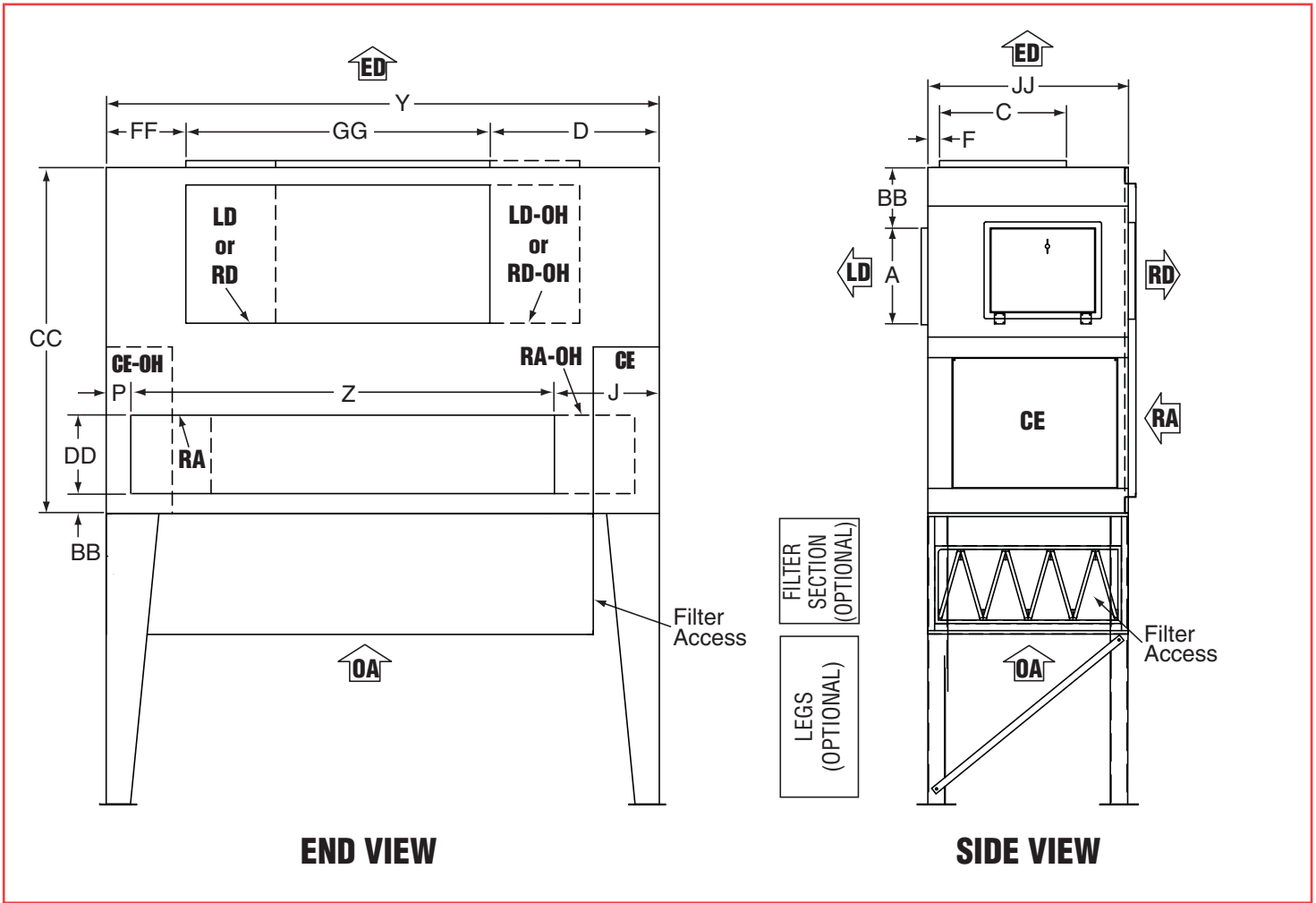
ESTIMATED SHIPPING WEIGHTS			
MODEL		AIR HANDLER	SKID
PCM115/ PCM118	(lb)	700.0	140.0
	(kg)	317.5	63.5
PCM125	(lb)	1,400.0	340.0
	(kg)	638.0	154.2
PCM130	(lb)	1,650.0	365.0
	(kg)	748.4	165.6

IMPORTANT NOTES:

- Shipping weights apply to both horizontal and upright models.
- All dimensions and weights are subject to change without notice.
- Outdoor air duct size varies. Consult factory.
- Support brace required on horizontal units only if both filter section and inlet hood are required. Support brace provided by factory.
- Control enclosure is located on the right side of the air handler when looking downstream into the inlet end.

LEGEND
BD = Bottom Discharge
CE = Control Enclosure
GC = Gas Connection
ED = End Discharge
LD = Left Discharge
OA = Outside Air
RA = Return Air (Optional)
RD = Right Discharge
TD = Top Discharge
OH = Opposite Hand

PCM225 & PCM230 Upright Model Dimensions



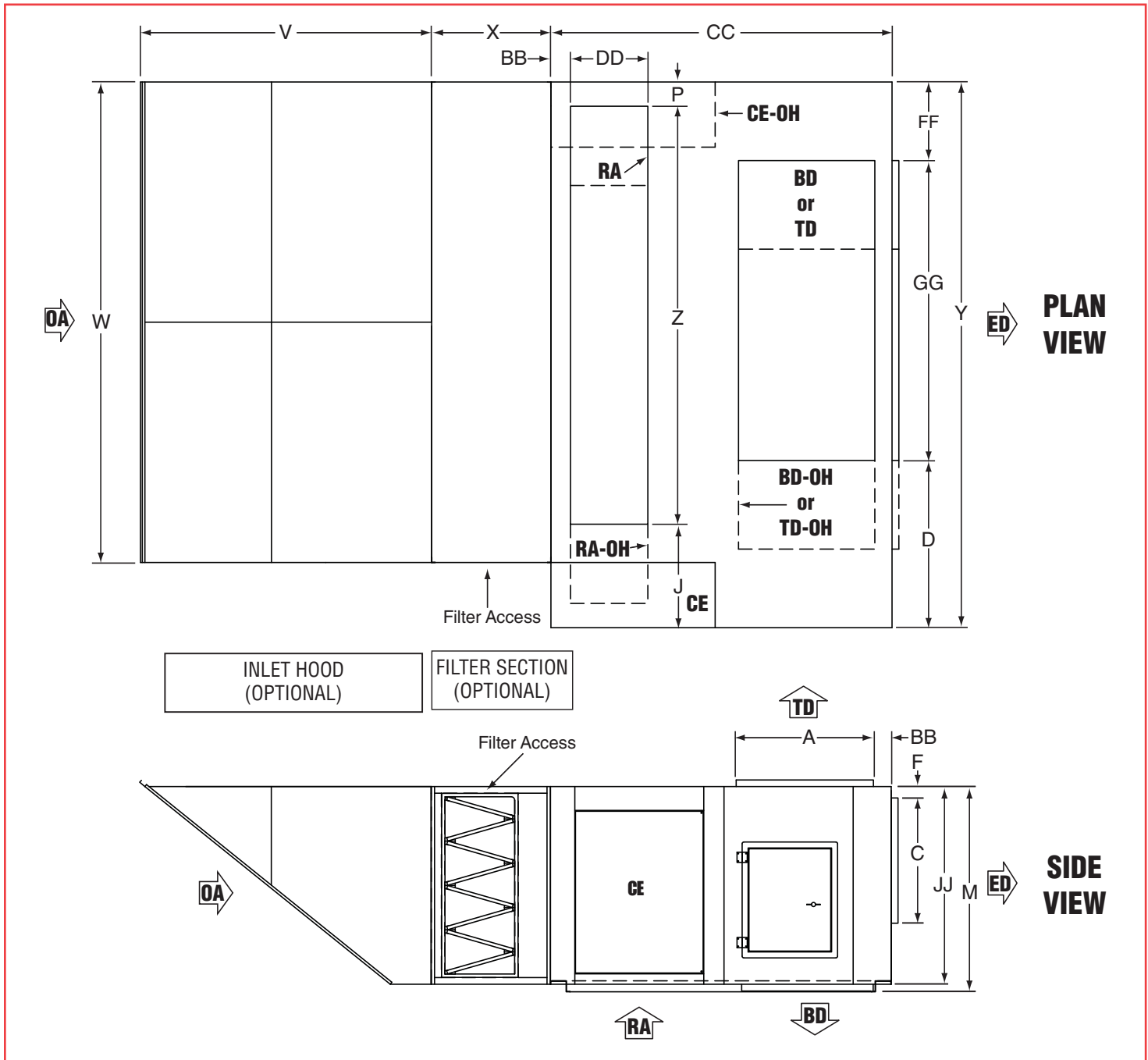
CABINET DIMENSIONS																
MODEL		A	C	F	J	M	P	V	W	X	Y	Z	BB	CC	DD	JJ
PCM225	(in)	40.6	31.5	12.4	31.6	60.3	5.8	86.0	138.8	34.0	160.0	122.5	5.0	100.1	28.6	58.0
	(cm)	103.1	80.0	31.5	80.3	153.0	14.7	218.4	352.6	86.4	406.4	311.2	12.7	254.3	72.6	147.3
PCM230	(in)	46.3	35.3	6.5	31.6	60.3	5.8	86.0	138.8	34.0	160.0	122.5	5.0	100.1	28.6	58.0
	(cm)	117.6	89.7	16.5	80.3	153.0	14.7	218.4	352.6	86.4	406.4	311.2	12.7	254.3	72.6	147.3

MODEL		BOTTOM DISCHARGE			END/TOP DISCHARGE		
		D	FF	GG	D	FF	GG
PCM225	(in)	47.6	23.8	88.3	47.9	24.1	87.8
	(cm)	120.9	60.5	224.3	121.7	61.2	223.0
PCM230	(in)	42.0	18.2	99.1	42.4	18.7	98.6
	(cm)	106.7	46.2	251.7	107.7	47.5	250.4

ESTIMATED SHIPPING WEIGHTS		
MODEL		AIR HANDLER
PCM225	(lb)	3,350.0
	(kg)	1,520.0
PCM230	(lb)	3,800.0
	(kg)	1,723.7



PCM225 & PCM230 Horizontal Model Dimensions



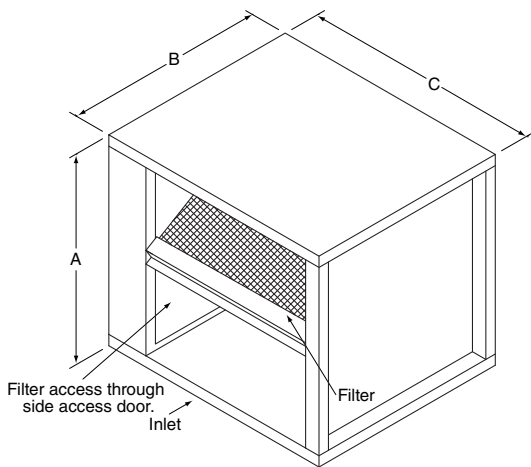
LEGEND	
BD	Bottom Discharge
CE	Control Enclosure
GC	Gas Connection
ED	End Discharge
LD	Left Discharge
OA	Outside Air
RA	Return Air (Optional)
RD	Right Discharge
TD	Top Discharge
OH	Opposite Hand

IMPORTANT NOTES:

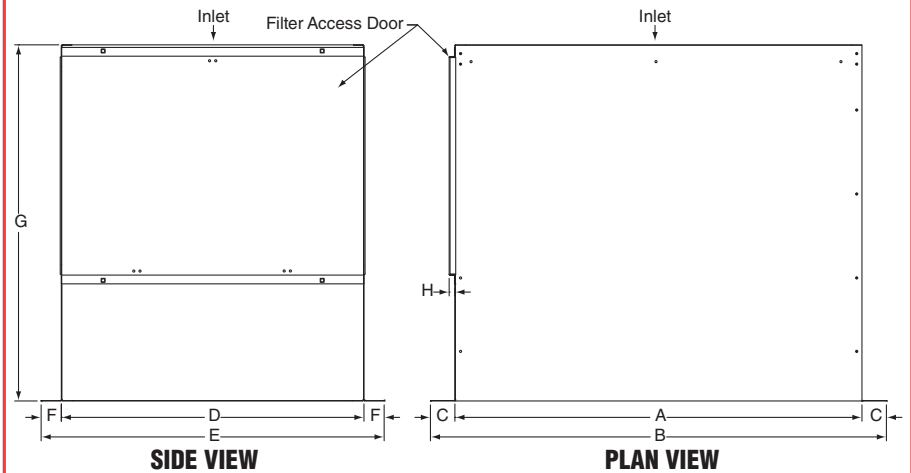
- Shipping weights apply to both horizontal and upright models.
- All dimensions and weights are subject to change without notice.
- Outdoor air duct size varies. Consult factory.
- Support brace required on horizontal units only if both filter section and inlet hood are required. Support brace provided by factory.
- Control enclosure is located on the right side of the air handler when looking downstream into the inlet end.



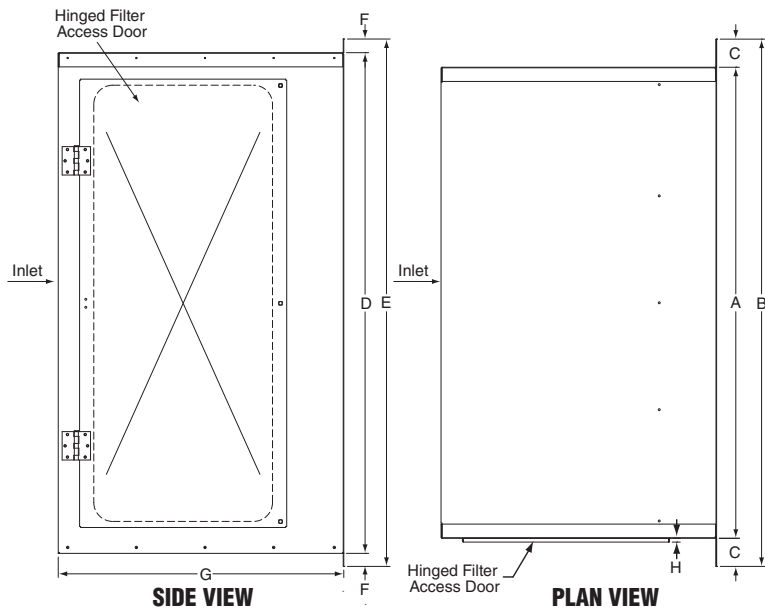
PCM112 FILTER SECTION



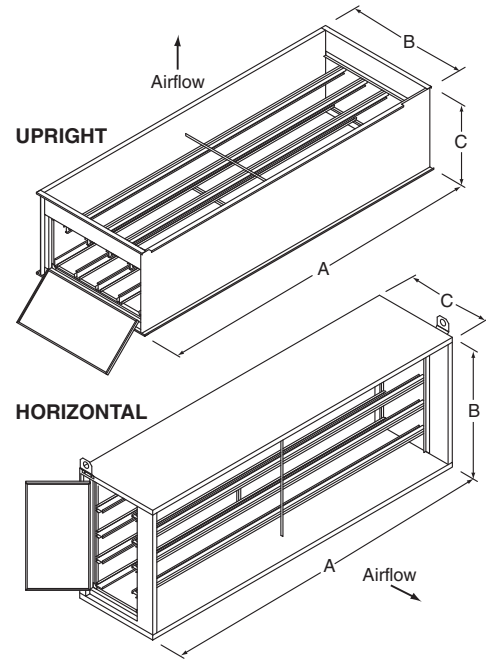
PCM115/PCM118 FILTER SECTION



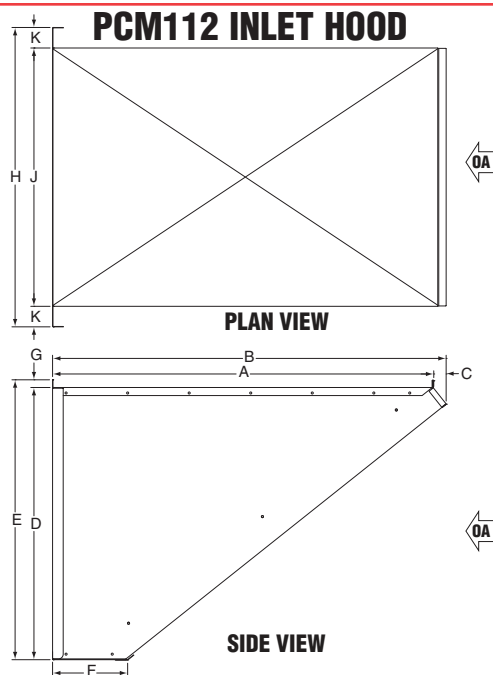
PCM125/PCM130 FILTER SECTION



PCM225/PCM230 FILTER SECTION



MODEL	FILTER SECTION DIMENSIONS									FILTERS				WEIGHT	
										PERMANENT ALUMINUM MESH		DISPOSABLE POLYESTER			
	A	B	C	D	E	F	G	H	SIZE	QTY	SIZE	QTY	lbs	kg	
PCM112	(in) (cm)	28.3 71.9	27.0 68.6	32.3 82.1	N/A	N/A	N/A	N/A	N/A	20 x 25 x 2 50.8 x 63.5 x 5.1	2	20 x 50 x 1 50.8 x 127 x 2.5	1	100.0	45.4
PCM115/PCM118	(in) (cm)	38.8 98.6	43.4 110.2	2.3 5.9	28.8 73.2	32.7 83.1	1.9 4.9	34.0 86.3	0.5 1.3	20 x 20 x 1 50.8 x 50.8 x 2.5	8	20 x 40 x 1 50.8 x 101.6 x 2.5	4	100.0	45.4
PCM125	(in) (cm)	49.7 126.2	55.7 141.5	3.0 7.6	52.8 134.1	55.7 141.5	1.4 3.6	31.0 78.7	0.4 1.0	20 x 25 x 1 50.8 x 63.5 x 2.5	12	20 x 50 x 1 50.8 x 127 x 2.5	6	220.0	99.8
PCM130	(in) (cm)	64.1 162.8	68.3 173.5	2.1 5.3	56.8 144.3	60.7 154.2	1.9 4.8	31.0 78.7	0.4 1.0	20 x 20 x 1 & 20 x 25 x 1 50.8 x 50.8 x 2.5 & 50.8 x 63.5 x 2.5	16 & 8 16 & 8	20 x 60 x 1 50.8 x 152.4 x 2.5	8	270.0	122.5
PCM225/PCM230 UPRIGHT	(in) (cm)	143.0 363.2	53.6 136.1	34.9 88.6	N/A	N/A	N/A	N/A	N/A	20 x 20 x 1 50.8 x 50.8 x 2.5	56	20 x 140 x 1 50.8 x 355.6 x 2.5	8	550.0	249.5
PCM225/PCM230 HORIZONTAL	(in) (cm)	138.8 352.6	57.9 147.1	34.0 86.4	N/A	N/A	N/A	N/A	N/A	20 x 20 x 1 50.8 x 50.8 x 2.5	56	20 x 140 x 1 50.8 x 355.6 x 2.5	8	580.0	263.1

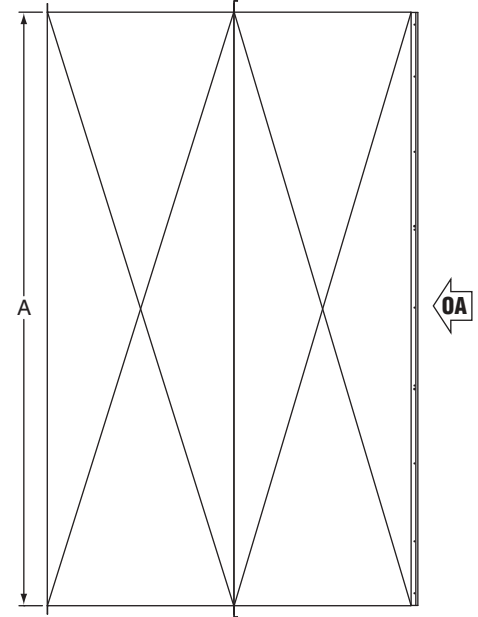


PCM112 INLET HOOD

PLAN VIEW

SIDE VIEW

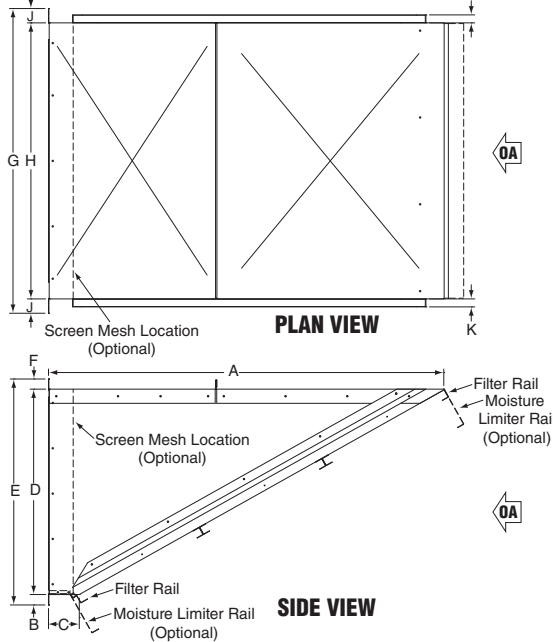
PCM225/PCM230 INLET HOOD



PLAN VIEW

SIDE VIEW

PCM115 - PCM130 INLET HOOD



PLAN VIEW

SIDE VIEW

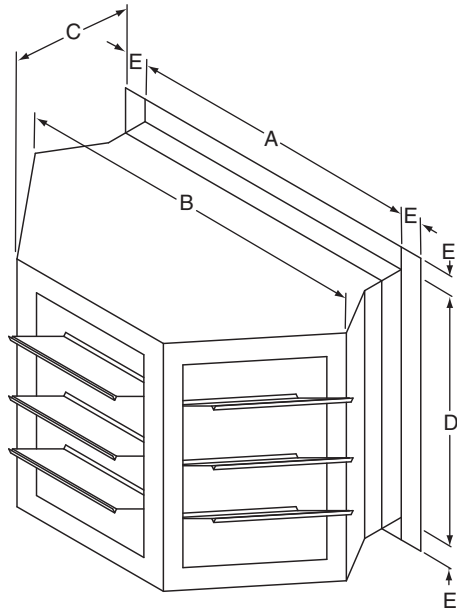
IMPORTANT NOTES:

- Inlet hood is also available with screen mesh, no filters.
- Inlet variation of screen mesh without filters has equal weight as inlet hoods with filters, with the exception of PCM225 and PCM230 (less 120 lbs/54 kg to filtered variation).

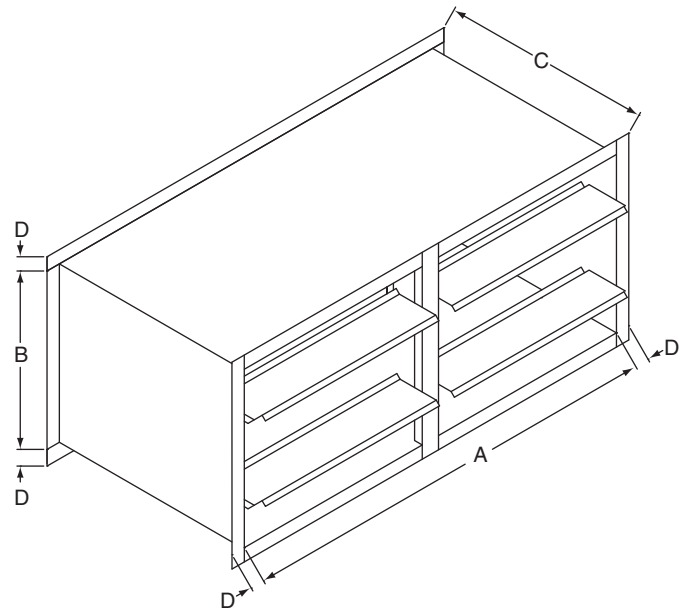
MODEL	INLET HOOD DIMENSIONS											INLET VARIATIONS (SEE NOTES)							
												PERMANENT ALUMINUM MESH FILTERS				MOISTURE LIMITER			
	A	B	C	D	E	F	G	H	J	K	SIZE	QTY	WEIGHT		SIZE	QTY	WEIGHT		
(in)	(cm)	(in)	(cm)	(in)	(cm)	(in)	(cm)	(in)	(cm)	(in)	(cm)	(in)	(cm)	lbs	kg	(in)	(cm)	lbs	kg
PCM112	(in)	37.2	38.4	1.2	26.4	27.3	7.3	0.9	29.2	25.0	2.1	20 x 25 x 2	2	60.0	27.2	N/A	N/A	N/A	N/A
	(cm)	94.5	97.5	3.0	67.1	69.3	18.5	2.3	74.2	63.5	5.3	50.8 x 63.5 x 5.1							
PCM115/ PCM118	(in)	56.4	1.5	4.3	29.0	31.9	1.4	43.0	38.9	2.0	1.1	20 x 20 x 1	6	110.0	49.9	12 x 60 x 5.5	3	120.0	54.4
	(cm)	143.2	3.8	10.9	73.7	81.0	3.6	109.0	98.8	5.1	2.8	50.8 x 50.8 x 2.5				30.5 x 152.4 x 14.0			
PCM125	(in)	89.3	1.3	5.0	52.8	55.3	1.3	52.1	49.7	1.2	1.1	20 x 25 x 1	10	190.0	86.2	12 x 96 x 5.5	4	210.0	95.3
	(cm)	226.8	3.3	12.7	134.1	140.5	3.3	132.3	126.2	3.0	2.8	50.8 x 63.5 x 2.5				30.5 x 243.8 x 14.0			
PCM130	(in)	86.9	1.3	4.7	56.8	59.3	1.3	66.8	64.1	1.3	1.1	20 x 20 x 1 & 20 x 25 x 1	10 & 5	240.0	108.9	12 x 96 x 5.5	5	260.0	117.9
	(cm)	220.7	3.3	11.9	144.3	150.6	3.3	169.7	162.8	3.3	2.8	50.8 x 50.8 x 2.5 & 50.8 x 63.5 x 2.5	10 & 5			30.5 x 243.8 x 14.0			
PCM225/ PCM230	(in)	137.5	86.0	58.0	N/A	N/A	N/A	N/A	N/A	N/A	N/A	24 x 24 x 2	24	600.0	272.2	12 x 96 x 5.5	12	710.0	322.0
	(cm)	349.3	218.4	147.3								61.0 x 61.0 x 5.1				30.5 x 243.8 x 14.0			



PCM112 - PCM130 THREE-WAY DISCHARGE HEAD



PCM225/PCM230 ONE-WAY DISCHARGE HEAD



THREE-WAY DISCHARGE HEAD DIMENSIONS

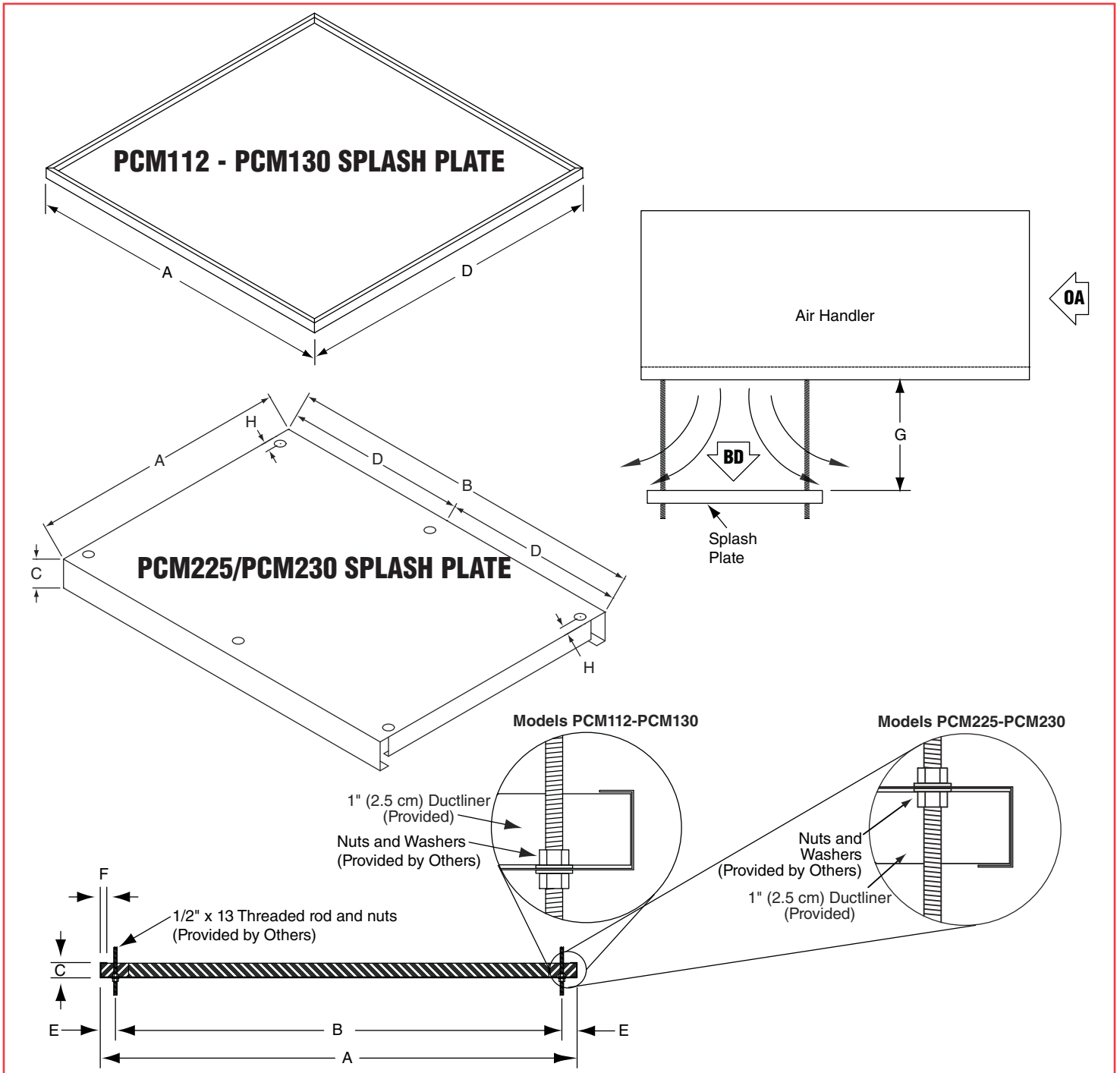
MODEL		A	B	C	D	E	WEIGHT	
							lbs	kg
PCM112	(in)	19.0	40.8	23.8	21.0	2.0	50.0	22.7
	(cm)	48.3	103.5	60.3	53.3	5.1		
PCM115/ PCM118	(in)	22.4	40.8	24.0	19.4	2.0	80.0	36.3
	(cm)	56.9	103.5	61.0	49.3	5.1		
PCM125	(in)	31.9	43.3	21.5	33.9	2.0	120.0	54.4
	(cm)	81.0	109.9	54.6	86.1	5.1		
PCM130	(in)	36.9	48.3	22.5	36.9	2.0	160.0	72.6
	(cm)	93.7	122.6	57.2	93.7	5.1		

ONE-WAY DISCHARGE HEAD DIMENSIONS

MODEL		A	B	C	D	WEIGHT	
						lbs	kg
PCM225	(in)	87.8	39.8	30.0	3.0	215.0	97.5
	(cm)	222.9	101.1	76.2	7.6		
PCM230	(in)	103.8	48.5	30.0	2.0	355.0	161.0
	(cm)	263.5	123.2	76.2	5.1		

IMPORTANT NOTES:

- Discharge head must be field supported by others.
- Discharge head has manually adjustable horizontal blades.



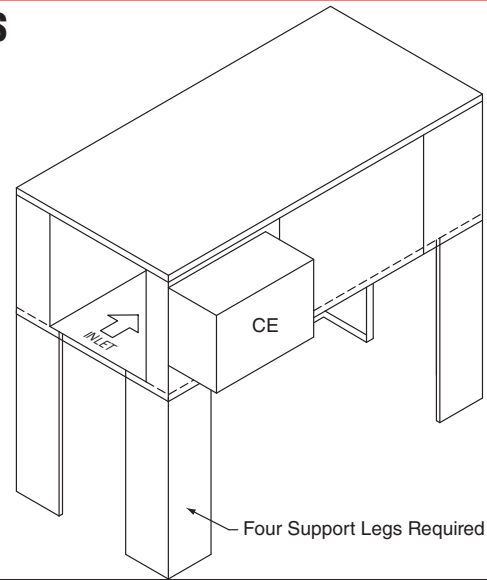
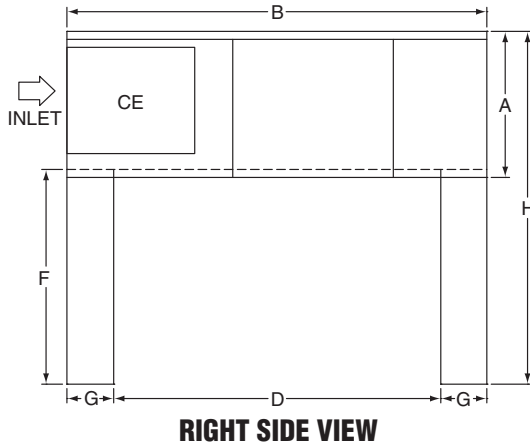
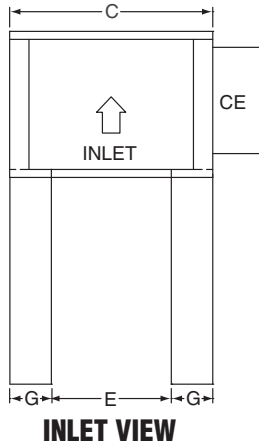
SPLASH PLATE DIMENSIONS											WEIGHT	
MODEL		A	B	C	D	E	F	G (min)	G (max)	H	lbs	kg
PCM112	(in) (cm)	22.0 55.9	19.5 49.5	0.9 2.2	25.0 63.5	1.3 3.2	0.6 1.6	15.0 38.1	20.0 50.8	N/A	20.0	9.1
PCM115/ PCM118	(in) (cm)	44.0 111.8	41.5 105.4	0.9 2.2	44.0 111.8	1.3 3.2	0.6 1.6	18.0 47.5	27.0 68.6	N/A	40.0	18.1
PCM125	(in) (cm)	54.8 139.1	51.3 130.2	1.8 4.4	54.8 139.1	1.8 4.4	0.8 2.0	25.0 63.5	38.0 96.5	N/A	60.0	27.2
PCM130	(in) (cm)	54.8 139.1	51.3 130.2	1.8 4.4	54.8 139.1	1.8 4.4	0.8 2.0	30.0 76.2	45.0 114.3	N/A	60.0	27.2
PCM225/ PCM230	(in) (cm)	51.0 129.5	110.4 280.4	3.0 7.6	55.2 140.2	2.0 5.1	1.0 2.5	25.0 63.5	38.0 96.5	1.8 4.6	170.0	77.1

IMPORTANT NOTES:

- PCM112 - PCM130 require four threaded rods.
- PCM225 and PCM230 require six threaded rods.



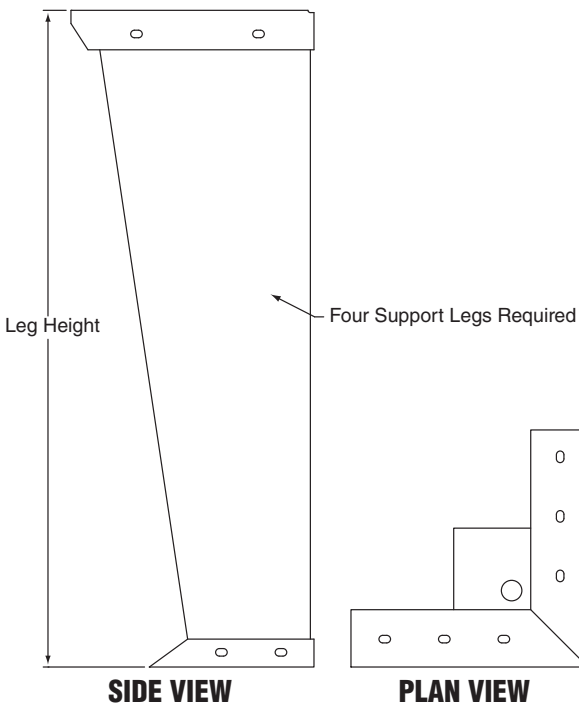
PCM112 - PCM130 LEGS



LEG DIMENSIONS

MODEL		A	B	C	D	E	F	G	H	WEIGHT (EACH LEG)	
										lbs	kg
PCM112 (See Note)	(in)	28.3	60.3	32.3	31.1	3.1	46.0	14.6	72.5	26.0	11.8
	(cm)	71.9	153.2	82.0	79.0	7.9	116.8	37.1	184.2		
PCM115/ PCM118	(in)	32.7	92.3	44.2	63.1	15.0	46.0	14.6	77.2	26.0	11.8
	(cm)	83.1	234.4	112.3	160.3	38.1	116.8	37.1	196.1		
PCM125	(in)	56.1	116.1	56.0	86.9	26.8	46.0	14.6	100.1	26.0	11.8
	(cm)	142.5	294.9	142.2	220.7	68.1	116.8	37.1	254.3		
PCM130	(in)	60.1	116.1	68.0	96.9	38.8	46.0	14.6	104.1	26.0	11.8
	(cm)	152.7	294.9	172.7	220.7	98.6	116.8	37.1	264.4		

PCM225/PCM230 LEGS



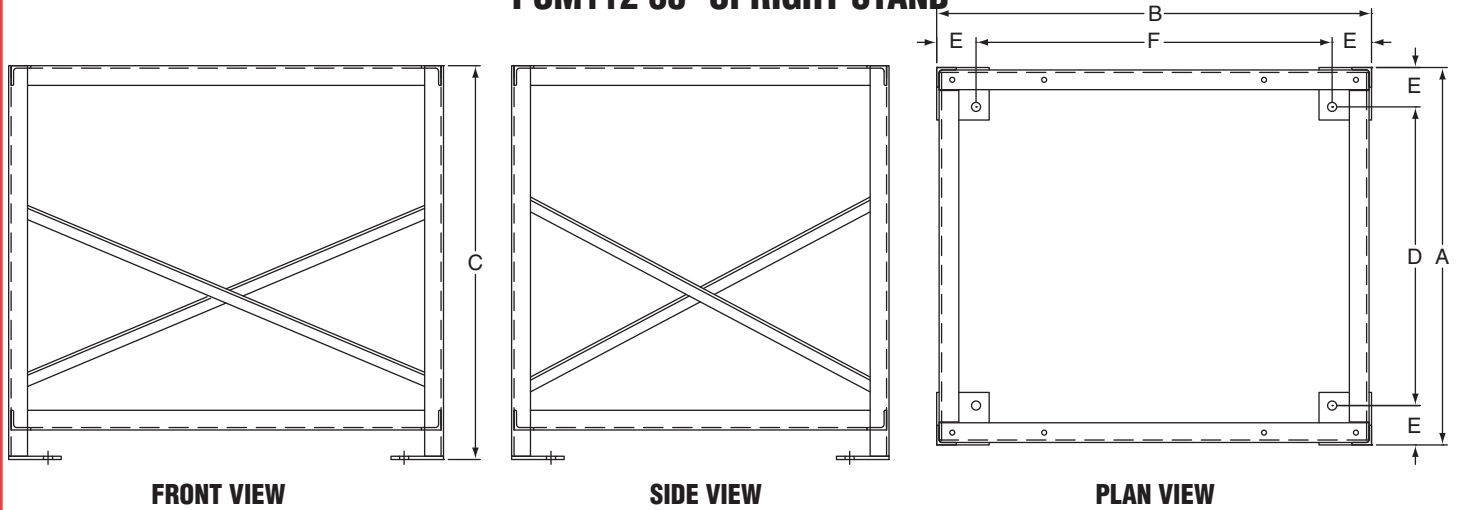
PCM225/PCM230 LEG DIMENSIONS

LEG HEIGHT		WEIGHT (EACH LEG)	
		lbs	kg
(in)	24.0	26.3	11.9
(cm)	61.0		
(in)	36.0	35.0	15.9
(cm)	91.4		
(in)	48.0	43.8	19.9
(cm)	121.9		
(in)	60.0	53.8	24.4
(cm)	152.4		
(in)	72.0	62.5	28.4
(cm)	182.9		
(in)	84.0	71.3	32.4
(cm)	213.4		
(in)	96.0	81.3	36.9
(cm)	243.8		

IMPORTANT NOTES:

- PCM112 control enclosure is located on the left side of the air handler when looking downstream of the inlet end.
- 24" (61 cm) and 36" (91.4 cm) leg heights are not available for upright units.
- 48" (121.9 cm) minimum leg height without filter section for PCM225.
- 60" (152.4 cm) minimum leg height without filter section for PCM230.
- 72" (182.9 cm) minimum leg height with a filter section for PCM225.
- 96" (243.8 cm) minimum leg height with a filter section for PCM230.

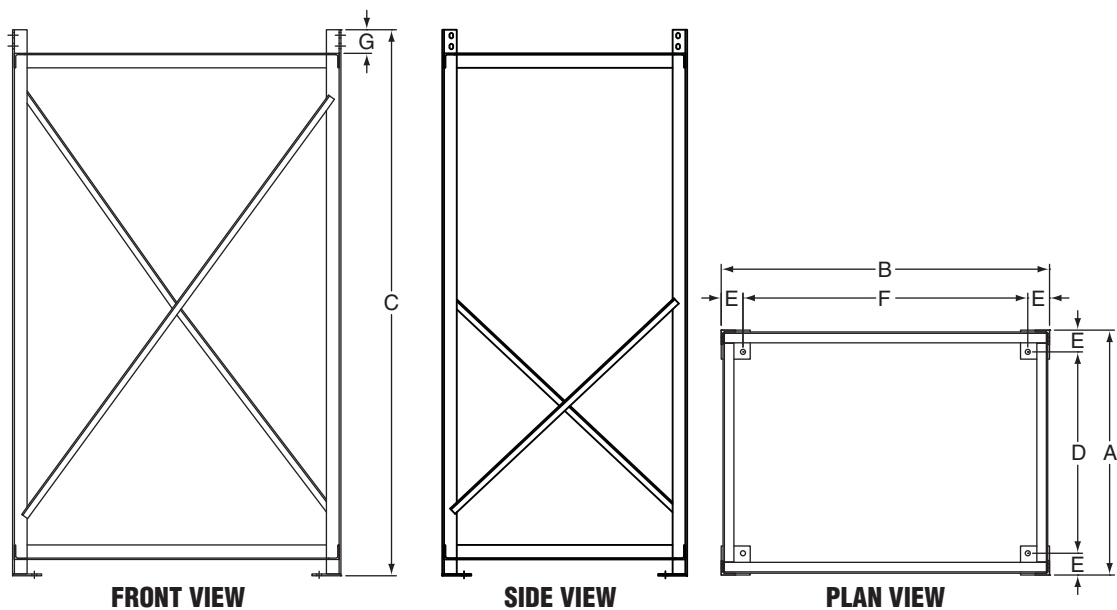
PCM112 30" UPRIGHT STAND



30" UPRIGHT STAND DIMENSIONS

MODEL		A	B	C	D	E	F	WEIGHT	
								lbs	kg
PCM112	(in) (cm)	28.8 73.0	33.1 84.1	30.0 76.2	22.8 57.8	3.0 7.6	27.1 68.9	75.0	34.0

PCM115 - PCM130 53"/72" UPRIGHT STAND



53"/72" UPRIGHT STAND DIMENSIONS

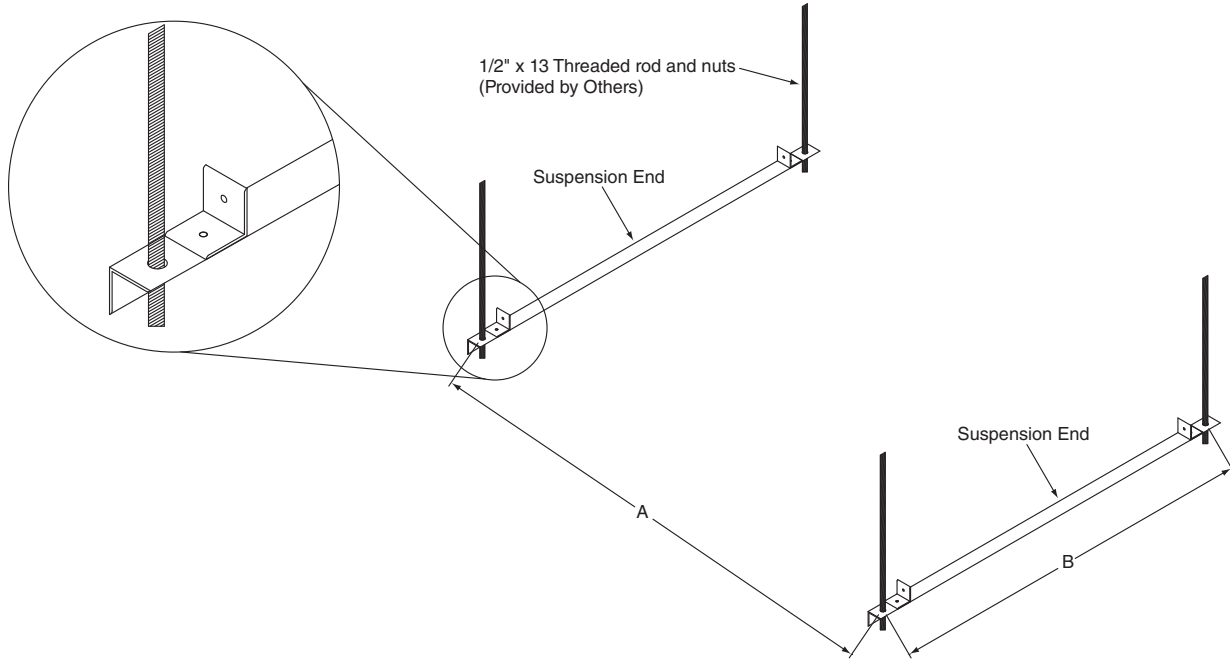
MODEL		A	B	C	D	E	F	G	WEIGHT	
									lbs	kg
PCM115/ PCM118 (53")	(in) (cm)	33.8 85.7	45.3 114.9	56.3 142.9	27.8 70.5	3.0 7.6	39.3 99.7	3.3 8.3	160.0	72.6
PCM115/ PCM118 (72")	(in) (cm)	33.8 85.7	45.3 114.9	75.3 191.1	27.8 70.5	3.0 7.6	32.5 82.6	3.3 8.3	190.0	86.2
PCM125	(in) (cm)	57.5 146.1	57.5 146.1	75.3 191.1	51.1 129.8	3.0 7.6	51.5 130.8	3.3 8.3	230.0	104.3
PCM130	(in) (cm)	69.5 176.5	61.8 156.8	75.3 191.1	63.5 161.3	3.0 7.6	55.8 141.6	3.3 8.3	300.0	136.1

IMPORTANT NOTES:

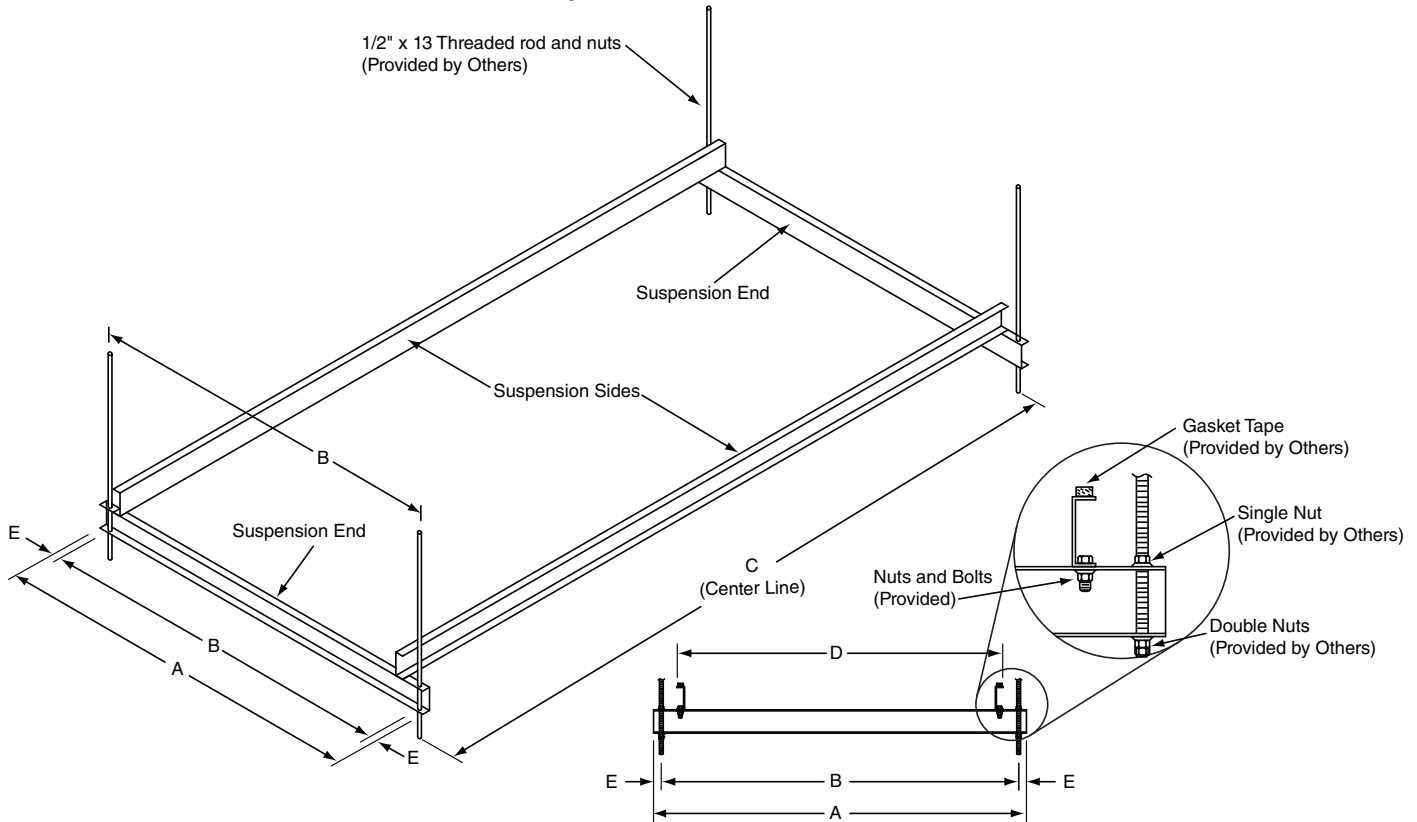
- 1/4" angle iron construction.



PCM112 SUSPENSION KIT



PCM115/PCM118 SUSPENSION KIT

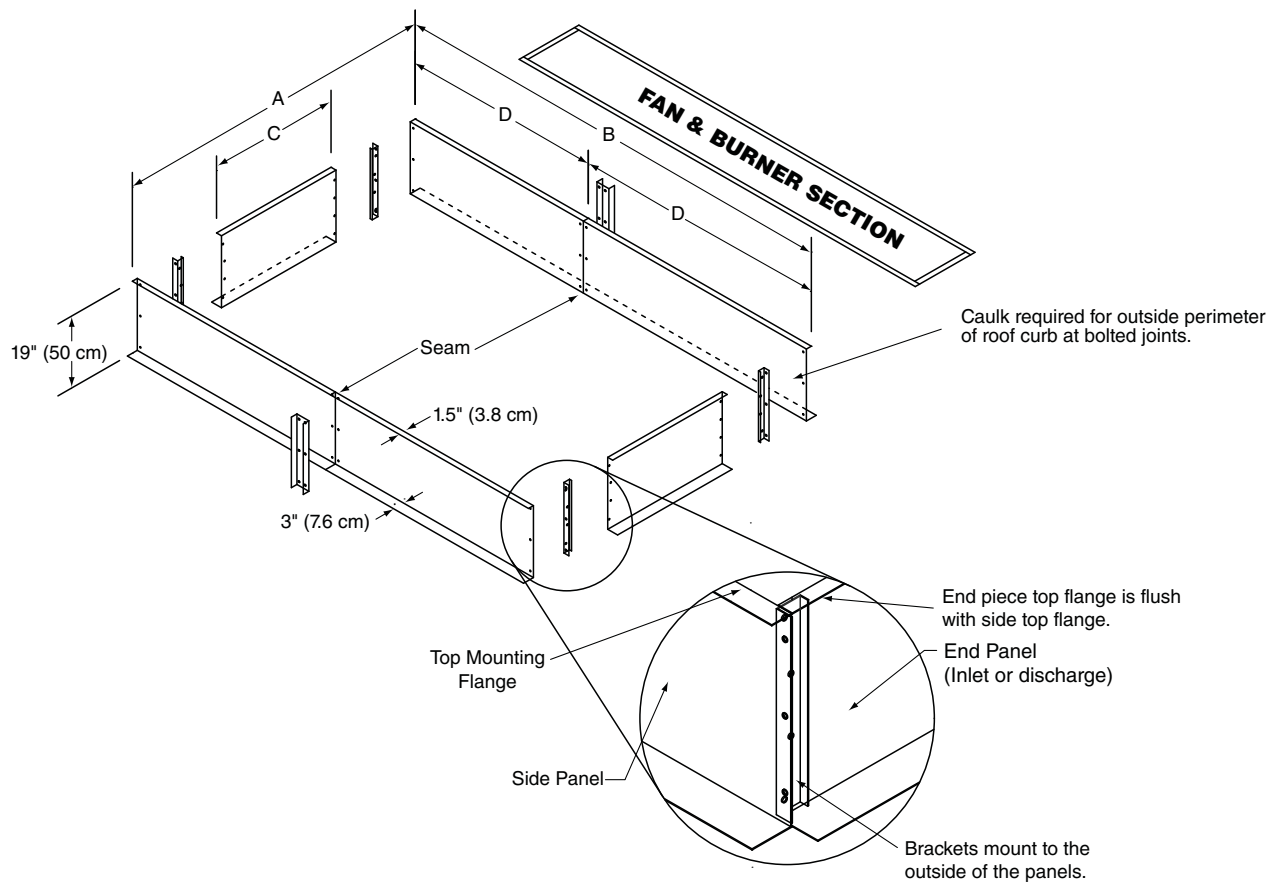


SUSPENSION KIT DIMENSIONS

MODEL		A	B	C	D	E	WEIGHT	
							lbs	kg
PCM112	(in)	59.3	36.5	N/A	N/A	N/A	13.0	5.9
	(cm)	73.0	84.1					
PCM115/PCM118	(in)	48.0	46.0	90.0	42.0	1.0	140.0	63.5
	(cm)	121.9	116.8	228.6	106.7	2.5		



PCM112 - PCM230 ROOF CURB



ROOF CURB DIMENSIONS

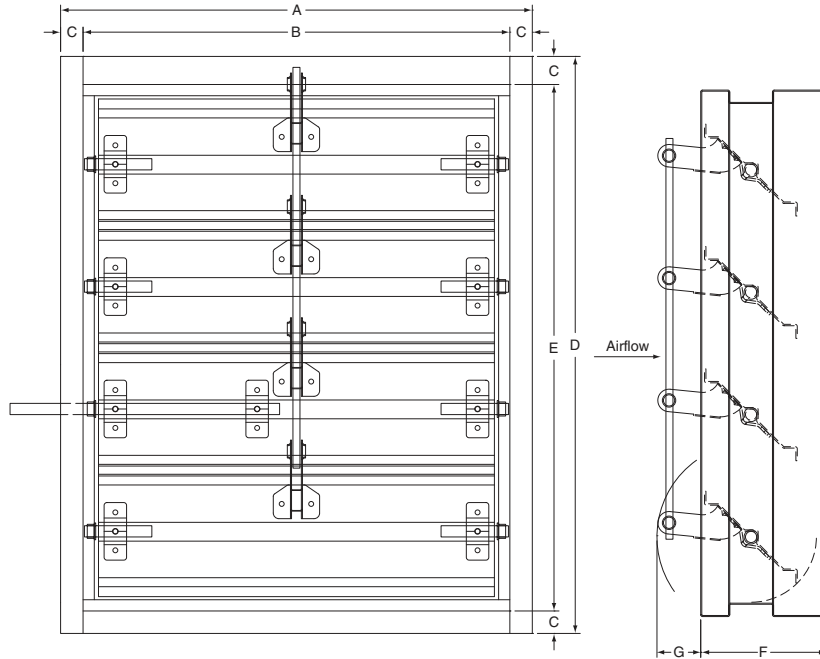
MODEL		A	B	C	D	WEIGHT	
						lbs	kg
PCM112	(in) (cm)	27.0 68.6	57.5 146.1	28.8 73.2	N/A	75.0	34.0
PCM115/PCM118	(in) (cm)	42.0 106.7	88.0 223.5	38.8 98.6	N/A	110.0	49.9
PCM125	(in) (cm)	53.0 134.6	113.0 287.0	49.8 126.5	56.5 143.5	150.0	68.0
PCM130	(in) (cm)	65.0 165.1	113.0 287.0	61.8 157.0	56.5 143.5	160.0	72.6
PCM225/PCM230	(in) (cm)	98.0 248.9	157.7 400.7	94.8 240.8	78.8 200.3	267.0	121.1

IMPORTANT NOTES:

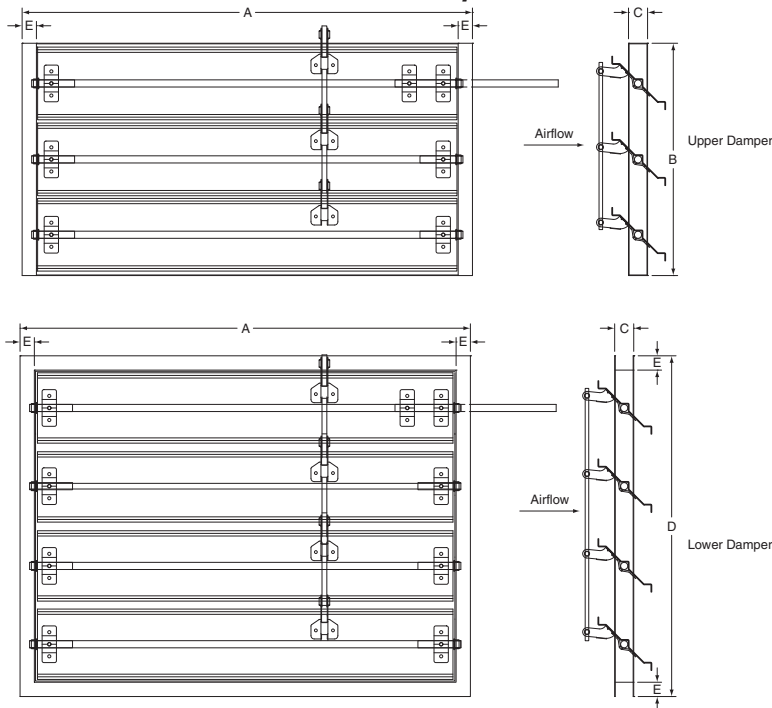
- Curb is shipped unassembled.
- All dimensions are from the outside.
- Curb material is 16 gauge galvanized steel for PCM112 - PCM130 and 14 gauge galvanized steel for PCM225 and PCM230.
- Nuts and bolts (3/8" x 1") are furnished.
- Caulk all joints before assembling. (Caulk provided by others).
- PCM125 - PCM230 have seam in roof curb.
- When measuring dimensions A and B, include the top mounting flange width on both sides.



PCM112 - PCM118 MOTORIZED INLET DAMPER



PCM125/PCM130 MOTORIZED INLET DAMPER



MODEL	DAMPER	WEIGHT*	
		lbs	kg
PCM125	UPPER	34.0	15.4
	LOWER	41.0	18.6
PCM130	UPPER	46.0	20.9
	LOWER	61.0	27.7

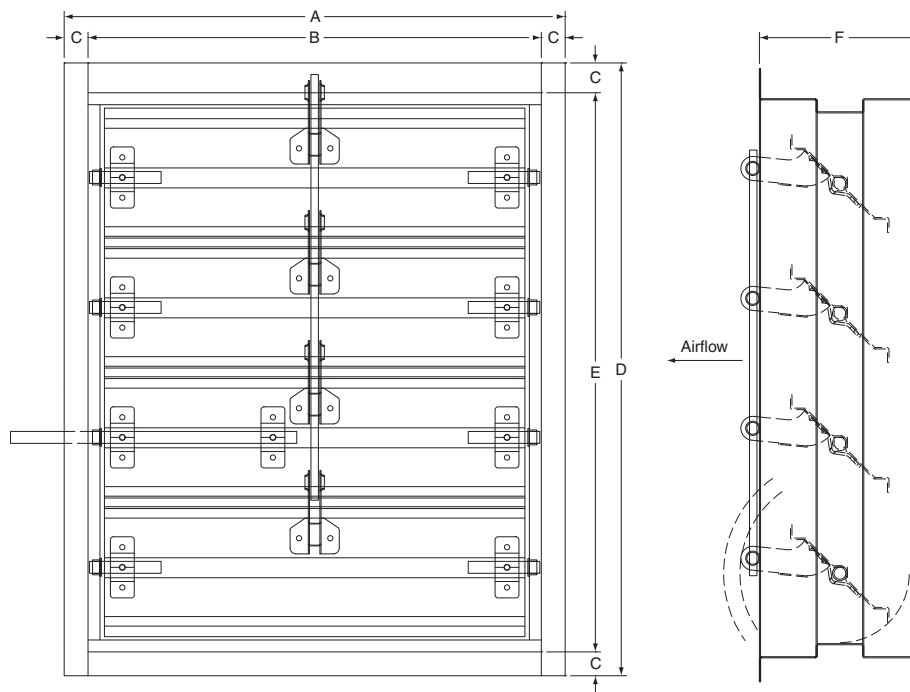
MOTORIZED INLET DAMPER DIMENSIONS

MODEL		A	B	C	D	E	F	G	WEIGHT	
									lbs	kg
PCM112	(in)	21.0	19.0	1.3	25.7	23.4	5.0	3.3	40.0	18.1
	(cm)	53.3	48.3	3.3	65.2	59.5	12.7	8.3		
PCM115/ PCM118	(in)	33.3	30.8	1.3	29.0	26.3	5.0	3.3	60.0	27.2
	(cm)	84.5	78.1	3.2	73.7	66.7	12.7	8.3		
PCM125	(in)	47.3	24.4	2.0	29.5	1.5	N/A	N/A	*	*
	(cm)	120.0	63.0	5.1	74.9	3.8				
PCM130	(in)	59.3	24.4	2.0	33.5	1.5	N/A	N/A	*	*
	(cm)	150.6	63.0	5.1	85.1	3.8				

*Refer to chart above for PCM125 and PCM130 weights.



PCM112 - PCM130 MOTORIZED DISCHARGE DAMPER



MOTORIZED DISCHARGE DAMPER DIMENSIONS

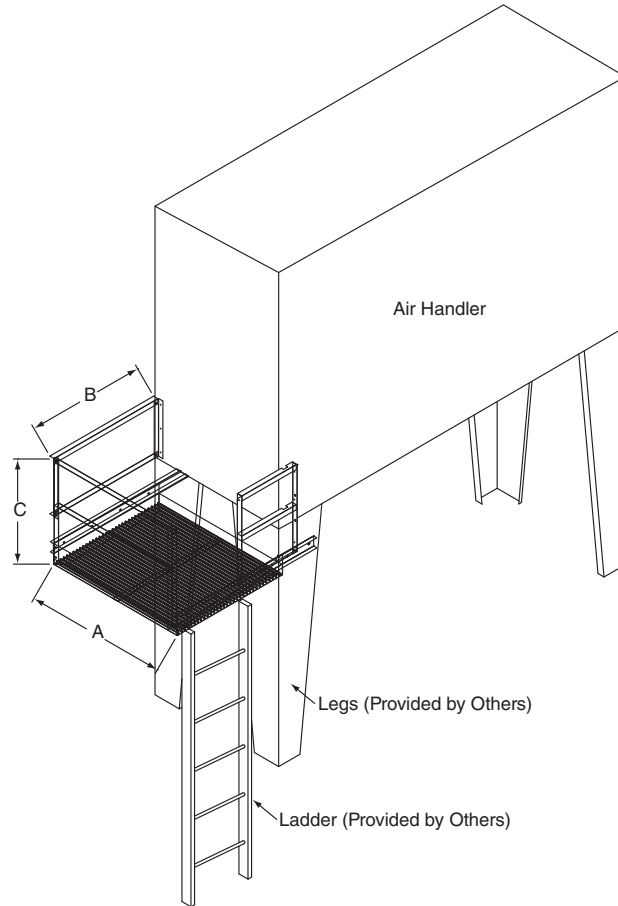
MODEL		A	B	C	D	E	F	WEIGHT	
								lbs	kg
PCM112	(in)	21.0	19.0	1.0	19.0	17.0	9.0	40.0	18.1
	(cm)	53.3	48.3	2.5	48.3	43.2	22.9		
PCM115/ PCM118	(in)	27.0	25.0	1.0	23.5	21.5	8.0	60.0	27.2
	(cm)	68.6	63.5	2.5	59.7	54.6	20.3		
PCM125	(in)	37.0	34.0	1.5	36.0	33.0	10.0	100.0	45.4
	(cm)	94.0	86.4	3.8	42.0	83.8	25.4		
PCM130	(in)	42.0	39.0	1.5	42.0	39.0	10.0	150.0	68.0
	(cm)	106.7	99.1	3.8	106.7	99.1	25.4		

IMPORTANT NOTES:

- Number of louvers will vary by model.
- Inlet dampers are mounted upstream of the air handler, directly to the air handler.
- Inlet dampers also available to ship loose.
- Inlet dampers for MUA style use both the upper and lower dampers for PCM125 and PCM130.
- Inlet dampers for FR, AM and VAV styles only use the upper damper for PCM125 and PCM130.
- Discharge dampers do not mount directly to the air handler; they mount downstream of the air handler in ductwork.



PCM225/PCM230 SERVICE PLATFORM



SERVICE PLATFORM DIMENSIONS

MODEL		A	B	C	WEIGHT	
					lbs	kg
PCM225/PCM230	(in) (cm)	57.0 144.8	49.0 124.5	43.0 109.2	325.0	147.0

Installation Code and Annual Inspections:

All installation and service of PHOENIX AIR SYSTEMS™ equipment must be performed by a contractor qualified in the installation and service of equipment sold and supplied by Phoenix Air Systems and conform to all requirements set forth in the PHOENIX AIR SYSTEMS™ manuals and all applicable governmental authorities pertaining to the installation, service and operation of the equipment. To help facilitate optimum performance and safety, Phoenix Air Systems recommends that a qualified contractor conduct, at a minimum, annual inspections of your PHOENIX AIR SYSTEMS™ equipment and perform service where necessary, using only replacement parts sold and supplied by Phoenix Air Systems.

Further Information: Applications, engineering and detailed guidance on system design, installation and equipment performance is available through PHOENIX AIR SYSTEMS™ representatives. Please contact us for any further information you may require, including the Installation, Operation and Service Manual.

These products are not for residential use.

This document is intended to assist licensed professionals in the exercise of their professional judgment.

Phoenix Air Systems

170 Landmark Drive, Suite B

Owatonna, Minnesota 55060

Telephone: +1.507.451.3524

Fax: +1.507.451.9185

www.phoenixairsystems.com

© 2010 Weather-Rite LLC All rights reserved. No part of this work covered by the copyrights herein may be reproduced or copied in any form or by any means – graphic, electronic, or mechanical, including photocopying, recording, taping, or information storage and retrieval systems – without written permission of Weather-Rite LLC.